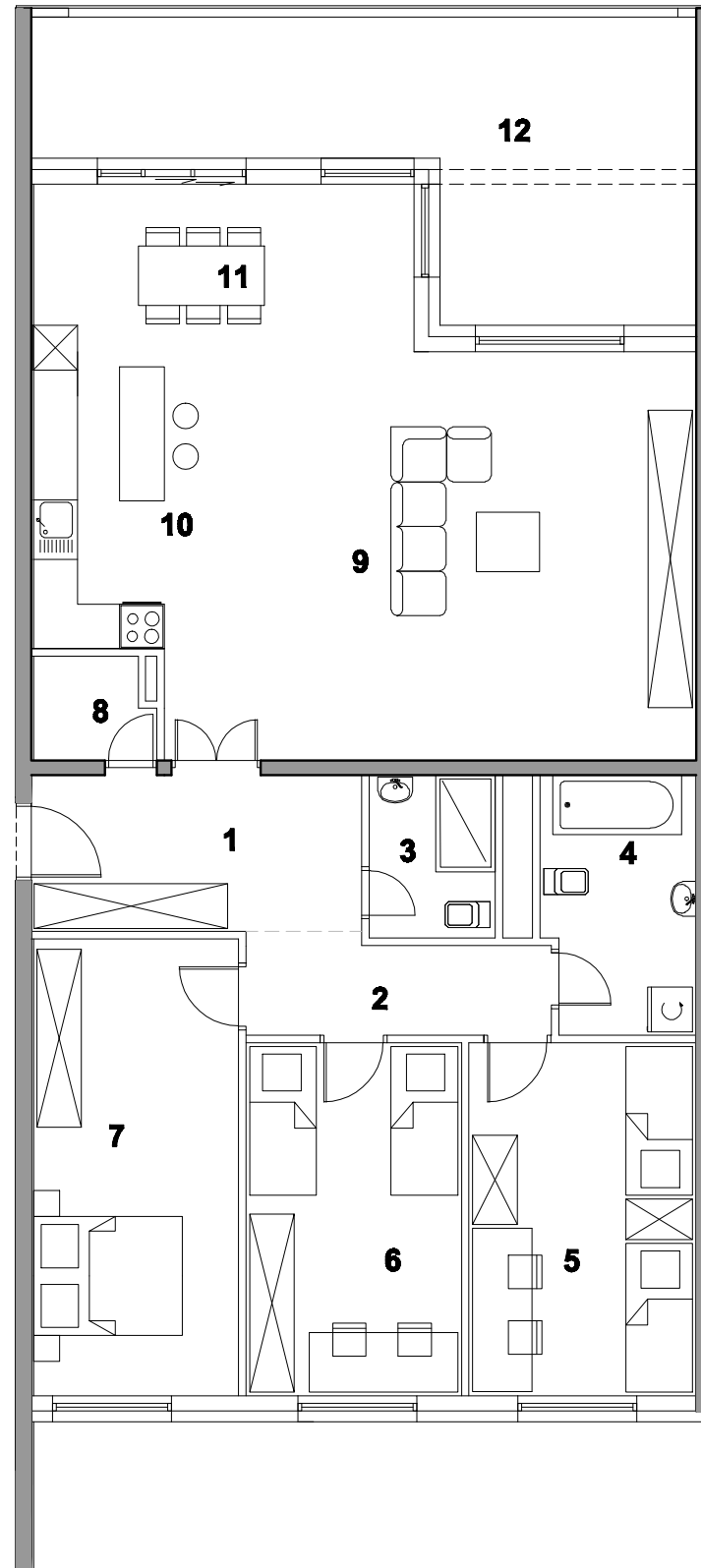


D1 STAN S 6-02 četverosobni

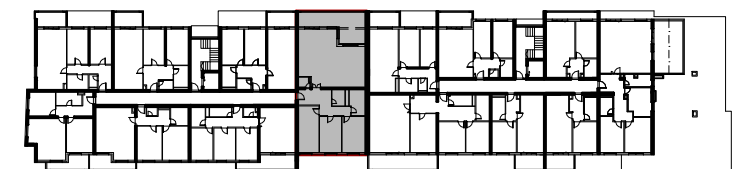
M 1:100



| | STVARNA POV. m ² | K | PRODAJNA POV. m ² |
|-------------------|--------------------------------|------|---------------------------------|
| 1. HALL | 9,33 | 1,0 | 9,33 |
| 2. HODNIK | 5,27 | 1,0 | 5,27 |
| 3. KUPAONICA | 3,72 | 1,0 | 3,72 |
| 4. KUPAONICA | 7,04 | 1,0 | 7,04 |
| 5. SOBA | 14,53 | 1,0 | 14,53 |
| 6. SOBA | 13,77 | 1,0 | 13,77 |
| 7. SOBA | 16,95 | 1,0 | 16,95 |
| 8. OSTAVA | 2,15 | 1,0 | 2,15 |
| 9. DNEVNI BORAVAK | 39,38 | 1,0 | 39,38 |
| 10. KUHINJA | 7,02 | 1,0 | 7,02 |
| 11. BLAGOVAONA | 11,50 | 1,0 | 11,50 |
| 12. LOĐA | 24,76 | 0,75 | 18,57 |
| UKUPNO | 155,42 | | 149,23 |



TLOCRT 6. KATA



ISTOČNO PROČELJE



ZAPADNO PROČELJE

