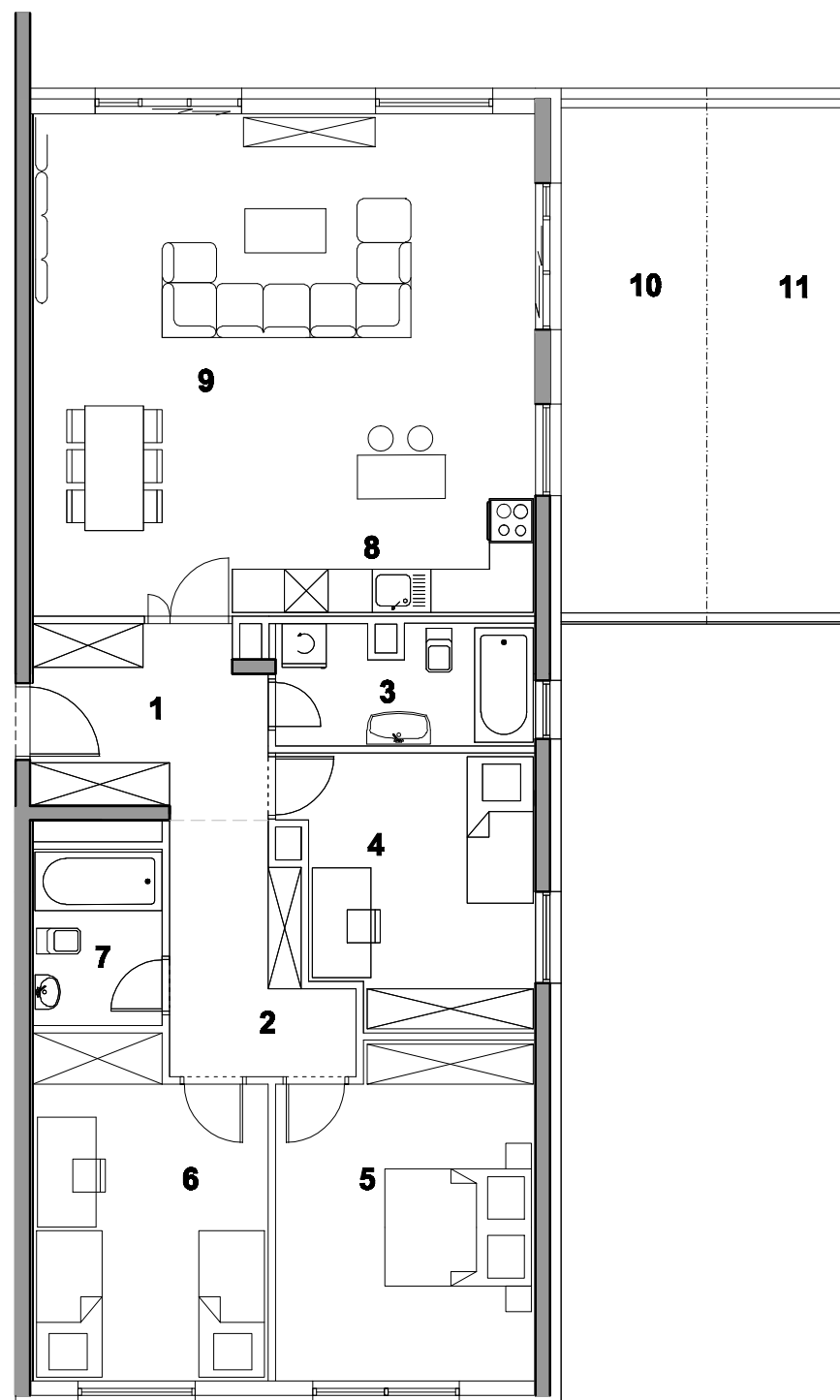
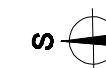


# D2 STAN S 6-09 četverosobni

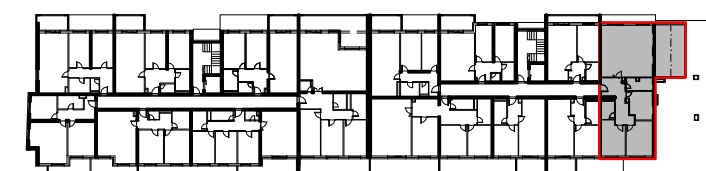
M 1:100



	STVARNA POV. m <sup>2</sup>	K	PRODAJNA POV. m <sup>2</sup>
1. HALL	7,98	1,0	<b>7,98</b>
2. HODNIK	6,92	1,0	<b>6,92</b>
3. KUPAONICA	5,67	1,0	<b>5,67</b>
4. SOBA	11,72	1,0	<b>11,72</b>
5. SOBA	15,80	1,0	<b>15,80</b>
6. SOBA	14,25	1,0	<b>14,25</b>
7. KUPAONICA	4,25	1,0	<b>4,25</b>
8. KUHINJA	6,64	1,0	<b>6,64</b>
9. DNEVNI BORAVAK I BLAGOVAONICA	40,33	1,0	<b>40,33</b>
10. NATKRIVENA TERASA	13,72	0,5	<b>6,86</b>
11. NENATKRIVENA TERASA	12,76	0,25	<b>3,19</b>
<b>UKUPNO</b>	<b>140,04</b>		<b>123,61</b>



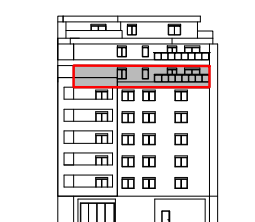
TLOCRT 6. KATA



ISTOČNO PROČELJE



JUŽNO PROČELJE



ZAPADNO PROČELJE

