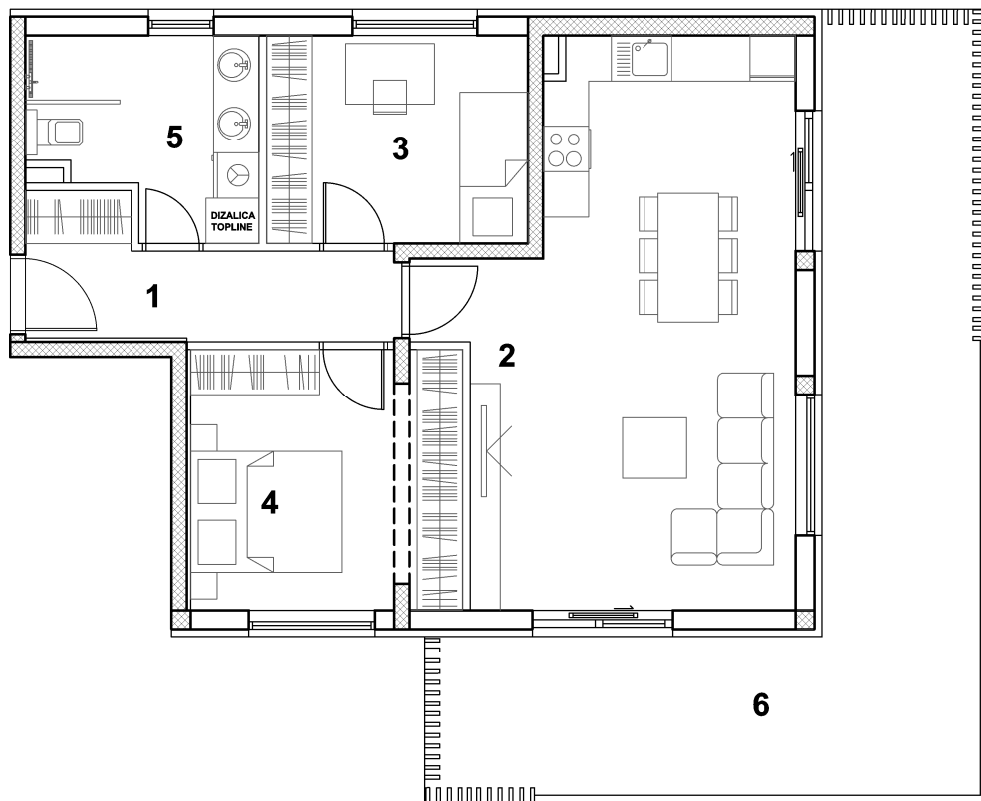


# STAN 2 trosobni - prizemlje

M 1:100



	STVARNA POV. m <sup>2</sup>	K	PRODAJNA POV. m <sup>2</sup>
1. HODNIK	6,88	1,0	6,88
2. DN.BORAVAK, KUHINJA I BLAGOVANJE	30,55	1,0	30,55
3. SOBA	9,52	1,0	9,52
4. SOBA	12,26	1,0	12,26
5. KUPAONICA	7,12	1,0	7,12
6. BALKON	32,45	0,25	8,11
<b>UKUPNO</b>	<b>98,78</b>		<b>74,44</b>
7. VANJ. PARKIRNO MJESTO	12,50	0,25	3,13
8. VANJ. PARKIRNO MJESTO	12,50	0,25	3,13

